



# Flat Wall Insulating Concrete Forms

## Description:

Universal—no top or bottom; no left or right corners. The iForm is constructed with two opposing panels of expanded polystyrene (EPS), held together with polypropylene ties. The flat configuration of the concrete within the forms provides walls that are straight, true, square and plumb. The ties are positioned every 6 inches, and serve as furring strips, top to bottom, recessed 1/2" below the surface of the EPS. The ties allow for rebar to be snapped in place in five different locations within the wall, two deep and with a loose fit that eliminates rebar strain.

## Application:

iForm is designed for use both above and below grade. The majority of all construction today is to the eaves in multi-story use in commercial and residential construction.

## xLerator™ Rapid Reinforcement

A galvanized welded wire reinforcement piece that simply drops into the pre-formed reinforcement slot in the ledge form to provide maximum strength in every corbel.

## Energy Efficiency:

Actual r-value of concrete & iForm: 22  
 Effective r-value of concrete, iForm, air infiltration, and thermal mass: 32+  
 Air changes per hour -- .04 - .09  
 Saves 50-80% on heating and cooling costs

## Safety:

### Fire Safety—

Intertek ETL Semko (ASTM E84/ASTM E119)

- Toxicity – 24 / Flame Spread – Less than 25 / Smoke Development – Less than 450
- Self-extinguishing
- Fire ratings: 9" = 1 & 2 hrs.; 11" = 3 hrs.; 13" & 15" = 4 hrs.

### Storm Safety—

- May withstand winds up to 200 mph
- Performs well in seismic zones
- Preferred product for safe rooms, basements and storm shelters

### Environmental Safety—

- No HCFC's or CFC's emitted during manufacturing process
- No off-gassing, fumes, odors, toxins, or formaldehyde
- Forms are recyclable
- EPA Energy Star® Partner
- Sound Transmission Class range from 41 to 65

## Evaluations & Associations

ICC ES ..... ESR-1552  
 Note: The ICC ES Report documents compliance to the UBC, SBC, NBC, IBC, IRC and the International One & Two Family Dwelling Code  
 Wisconsin ..... 200246-I  
 Miami-Dade County ..... 03.1112.05  
 City of NY ..... MEA 116-03-M  
 Florida Product Approval..... FL1743  
 City of L.A ..... RR25418  
 AIA/CES ..... Registered Provider #J143  
 CCMC. .... 13107-R  
 ASTM ..... E119 & E84

## iForm Specifications

All iForms are 16" high, weigh approximately 5.5 lbs., and contain ties 6" on center

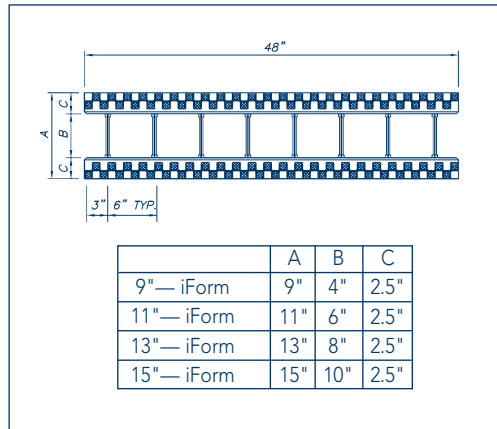
STRAIGHT	LENGTH	CONCRETE WIDTH	RETURN	SURFACE AREA	CONCRETE VOLUME 1 YARD FILLS
9" FORM	48"	4"	N/A	5.33 SQ. FT.	15.1 FORMS
11" FORM	48"	6"	N/A	5.33 SQ. FT.	10.0 FORMS
13" FORM	48"	8"	N/A	5.33 SQ. FT.	7.5 FORMS
15" FORM	48"	10"	N/A	5.33 SQ. FT.	6.0 FORMS
STANDARD 90° CORNER	OUTSIDE LENGTH	CONCRETE WIDTH	OUTSIDE RETURN	SURFACE AREA	CONCRETE VOLUME 1 YARD FILLS
9" FORM	25"	4"	13"	4.22 SQ. FT.	25.0 FORMS
11" FORM	27"	6"	15"	4.67 SQ. FT.	15.7 FORMS
13" FORM	29"	8"	17"	5.11 SQ. FT.	11.0 FORMS
15" FORM	31"	10"	19"	5.54 SQ. FT.	8.3 FORMS
EXTENDED 90° CORNER	OUTSIDE LENGTH	CONCRETE WIDTH	OUTSIDE RETURN	SURFACE AREA	CONCRETE VOLUME 1 YARD FILLS
9" FORM	31"	4"	19"	5.55 SQ. FT.	17.8 FORMS
11" FORM	33"	6"	21"	6.00 SQ. FT.	11.3 FORMS
13" FORM	35"	8"	23"	6.44 SQ. FT.	8.1 FORMS
45° CORNER	OUTSIDE LENGTH	CONCRETE WIDTH	OUTSIDE RETURN	SURFACE AREA	CONCRETE VOLUME 1 YARD FILLS
9" FORM	22"	4"	10"	3.55 SQ. FT.	25.5 FORMS
11" FORM	22"	6"	10"	3.55 SQ. FT.	16.5 FORMS
13" FORM	22"	8"	10"	3.55 SQ. FT.	12.2 FORMS
LEDGE FORM	LENGTH	CONCRETE WIDTH	RETURN	SURFACE AREA	CONCRETE VOLUME 1 YARD FILLS
11" FORM	48"	6" + 4-1/2" LEDGE	N/A	5.33 SQ. FT.	7.7 FORMS
13" FORM	48"	8" + 4-1/2" LEDGE	N/A	5.33 SQ. FT.	6.1 FORMS
T-FORM LONG	LENGTH	CONCRETE WIDTH	RETURN	SURFACE AREA	CONCRETE VOLUME 1 YARD FILLS
11" FORM	48"	6"	16"	5.33 SQ. FT.	7.3 FORMS
T-FORM SHORT	LENGTH	CONCRETE WIDTH	RETURN	SURFACE AREA	CONCRETE VOLUME 1 YARD FILLS
11" FORM	48"	6"	4"	5.33 SQ. FT.	8.9 FORMS



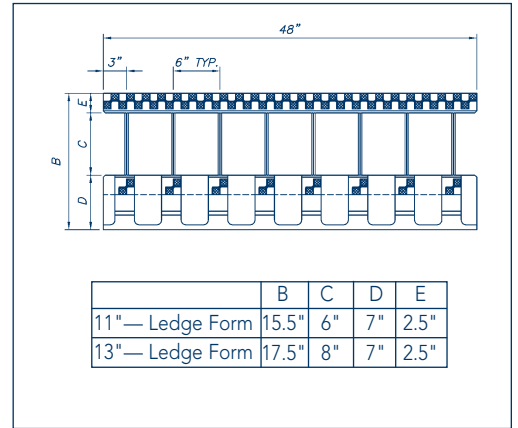


9931 S. 136th Street  
Suite 100  
Omaha, NE 68138-3936  
402-592-7077  
Toll-Free 800-468-6344  
Fax 402-592-7969  
www.rewardwalls.com

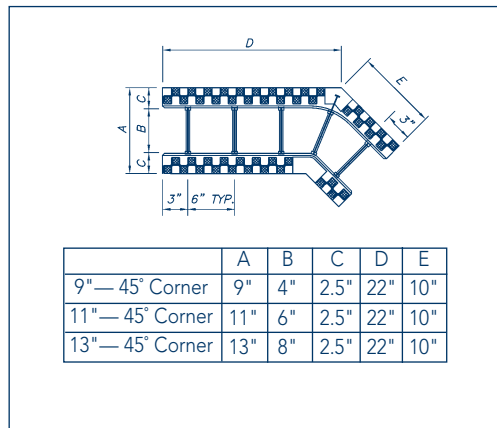
### STRAIGHT



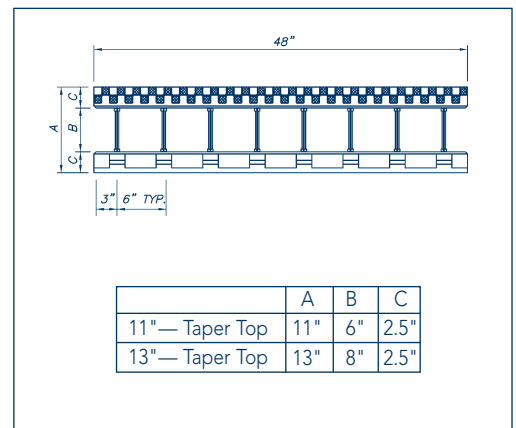
### LEDGE FORM



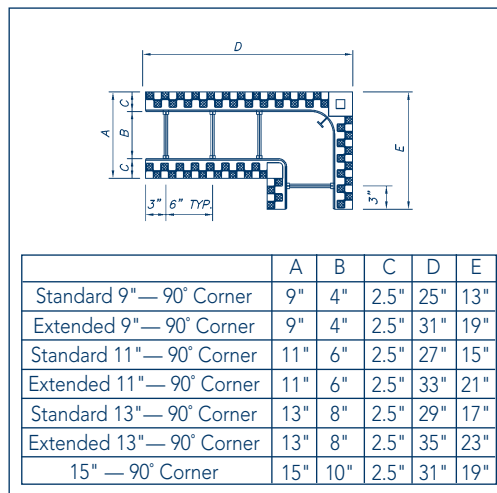
### 45° CORNER



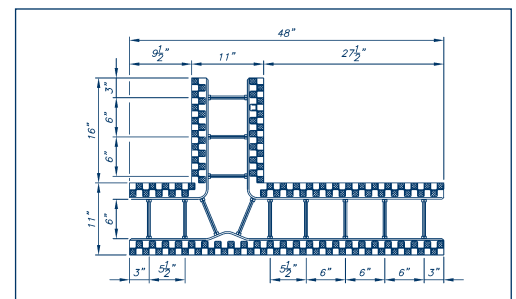
### TAPER TOP



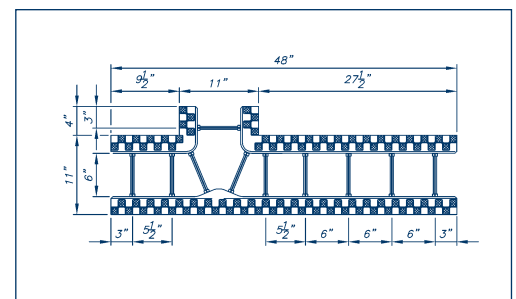
### 90° CORNER



### LONG T-FORM



### SHORT T-FORM



These products are covered by U.S. Patent #6,820,384